



NetSupport DNA Mobile Console

User Guide



Manual COPYRIGHT (C) 2019 NetSupport Ltd. All rights reserved.

The Information in this document is subject to change without notice. NetSupport Ltd. reserves the right to revise this document and to make changes from time to time in the content hereof without obligation to notify any person or persons of such revisions or changes.

The software described in this document is supplied under a licence agreement and is protected by international copyright laws. You may copy it only for the purpose of backup and use it only as described in the Licence agreement.

Any implied warranties including any warranties of merchantability or fitness for a particular purpose are limited to the terms of the express warranties set out in the licence agreement.

Program COPYRIGHT (C) 2019 NetSupport Ltd. All rights reserved.

Trademarks

NetSupport and NetSupport DNA are registered trademarks of NetSupport Ltd.

Windows, Windows XP, Vista, Windows 7, Windows 8/8.1 and Windows 10 are trademarks of Microsoft Corporation.

Other products, trademarks or registered trademarks are the property of their respective owners.



Software Licence Agreement

Please read this agreement before using your copy of NetSupport software. This is a legal agreement between you and NetSupport Ltd. If you do not wish to be bound by the terms of this licence agreement, you must not load, activate or use the software.

TERM: Subject to termination under Termination Clause below the licence shall be perpetual.

GRANT OF LICENSE: Subject to the payment of the applicable license fees, and subject to your abidance by the terms and conditions of this agreement, NetSupport Ltd hereby grants to you a non-exclusive, non-transferable right to use one copy of the specified version of the software which you have acquired.

USE: The software is licensed with volume use terms specified in the applicable order acknowledgement, product invoice, license certificate or product packaging. You may make, install and use as many additional copies of the software on the number of devices as the terms specify. You must have a reasonable mechanism in place to ensure that the number of devices on which the software has been installed does not exceed the number of licenses you have obtained.

SERVER USE: To the extent that the applicable order acknowledgement, product invoice, product packaging or license certificate sets forth, you may use the software on a device or on a Server within a multi-user or networked environment ("Server Use"). A separate license is required for each device or "seat" that may connect to the software at any time, regardless of whether such licensed devices or seats are connected to the software concurrently, or are actually using the software at any particular time. Your use of software or hardware that reduces the number of devices or seats that connect to and use the software directly or simultaneously (e.g., "multiplexing" or "pooling" software or hardware) does not reduce the number of licenses required. Specifically, you must have that number of licenses that would equal the number of distinct inputs to the multiplexing or pooling software or hardware "front end"). If the number of devices or seats that can connect to the software can exceed the number of licenses you have obtained, then you must have a reasonable mechanism in place to ensure that your use of the software does not exceed the use limits specified for the license you have obtained.

COPYRIGHT: This software is protected by international copyright laws. You may copy it only for backup purposes. The software is licensed to you, but not sold to you.

RESTRICTIONS: Neither you nor any reseller may rent, lease, sell licensed copies [on approval], or otherwise transfer the right to use this software to another person, except that you may sell or give away your original copy, as long as you do not keep any copies. The software may not be modified, disassembled or reverse engineered except with the prior written consent of NetSupport Ltd.

LIMITED WARRANTY: NetSupport Ltd warrants that the software will perform substantially in accordance with the accompanying documentation for a period of ninety (90) days from the date of purchase. NetSupport's entire liability and your exclusive remedy shall be either a) the replacement of the defective software or b) return of the price paid. This remedy shall be at NetSupport's option and subject to proof of purchase from an authorised source.

Any implied warranties (including any warranties of quality or fitness for a particular purpose) are limited to the terms of the express warranties. NetSupport Ltd. shall not in any event be liable for loss of profits, data or information of any kind or for special, incidental, consequential, indirect or other similar damages arising from any breach of these warranties or use of the software even if they have been advised of the possibility of such damages. Some countries do not allow the limitation or exclusion of incidental or consequential damages, so the above limitation or exclusion may not apply to you. This warranty does not affect your statutory rights, and you may have other rights that vary from country to country. In any event, NetSupport's maximum liability shall not exceed the price paid by the end-user/licensee.

TERMINATION: You may terminate this licence and this Agreement at any time by destroying the program and its documentation, together with any copies in any form.

NetSupport Ltd. may terminate this licence forthwith by notice in writing to you if you commit any serious breach of any term of this licence and (in the case of a breach capable of being remedied) shall have failed within 30 days after receipt of a request in writing from NetSupport Ltd. so to do, to remedy the breach (such request to contain a warning of NetSupport's intention to terminate). Upon termination, you will destroy or return to NetSupport Ltd the original and all copies of the software and will confirm in writing to NetSupport Ltd that this has been done.

SUPPORT: If you have a problem with the installation of the software you should in the first instance contact your supplier. You can separately purchase support and maintenance which will also cover the supply of enhancements and upgrades.

GOVERNING LAW: This agreement shall be governed by the laws of England.



Table of Contents

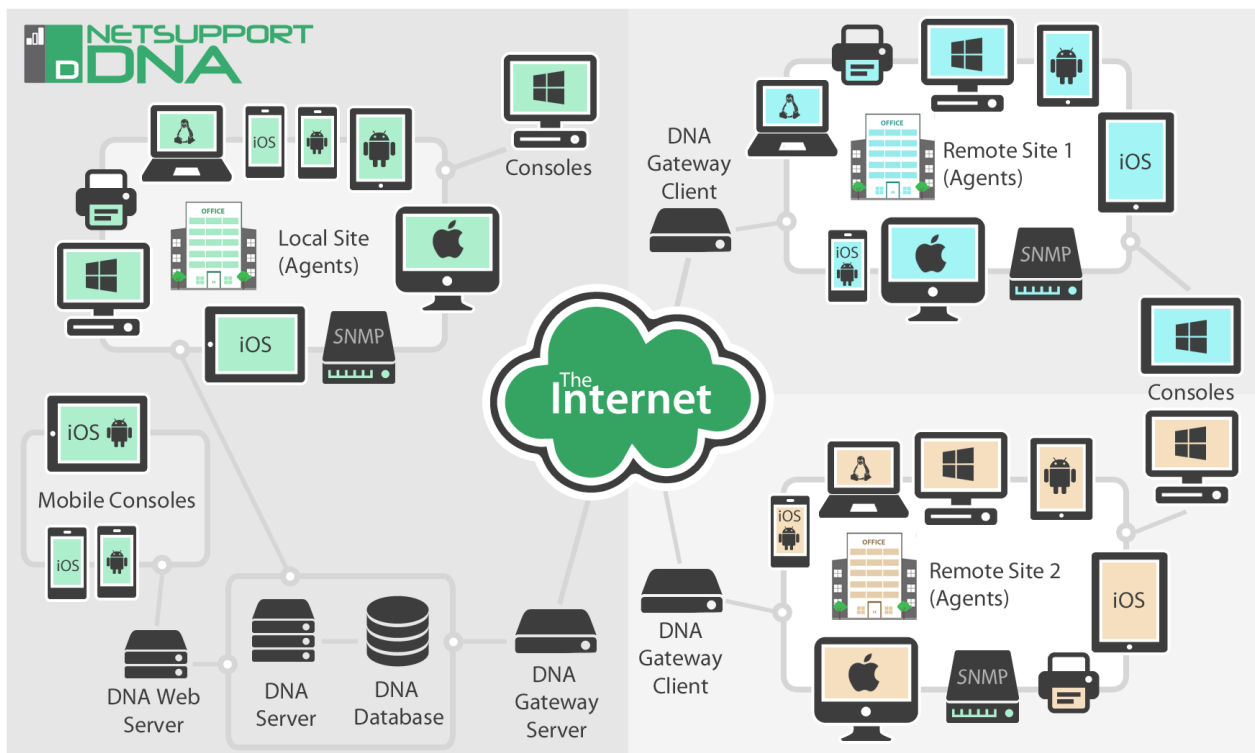
Introduction	5
Installation	5
Web Server installation	5
NetSupport DNA Web Server installation program	5
NetSupport DNA Web Server Licence Agreement	5
Destination folder..	6
NetSupport DNA Web Server database setup	6
Ready to install the program	7
Installation complete	7
Configuring the NetSupport DNA Mobile Console	7
Using the NetSupport DNA Mobile Console	8
Contact us	9



Introduction

The NetSupport DNA Mobile app can be used in conjunction with NetSupport DNA. It allows a technician, when away from their desk, to search for and view a detailed Hardware and Software Inventory for any PC on the network. The mobile app also includes a QR code scanner to help instantly identify any PC, either from an on-screen QR code displayed by DNA, or from a label fixed to the device.

It consists of a Web Server that is installed on a Windows machine and a Mobile Console that can be installed on Android 4.03 or higher and iOS 7 or higher devices.



Installation

Web Server installation

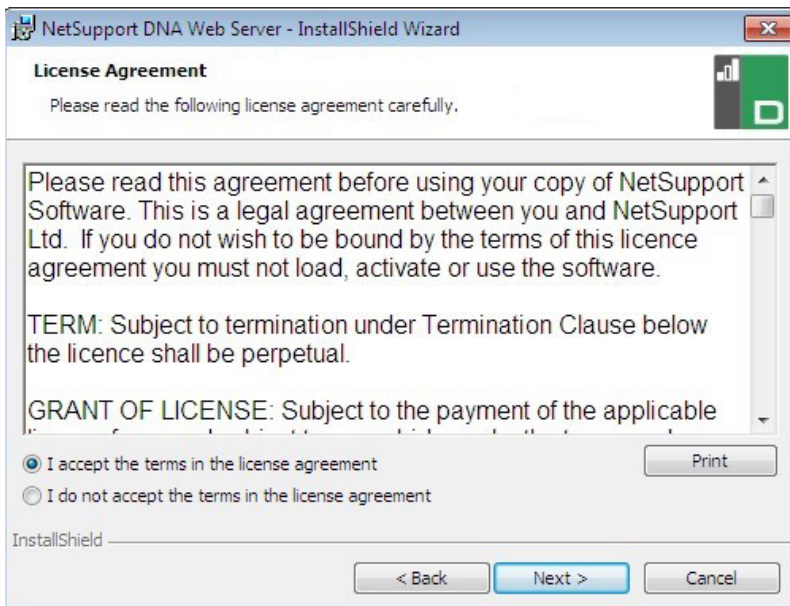
The NetSupport DNA Web Server application can be installed on Windows Vista or higher or Windows Server 2003 SP2 or higher. It can be installed on the same machine as the NetSupport DNA Server, or if you require remote access, on a computer with a publicly accessible IP address.

NetSupport DNA Web Server installation program

The Installer Welcome screen will appear. Click **Next** to continue.

NetSupport DNA Web Server Licence Agreement

The NetSupport Licence Agreement will be displayed. Please read the Licence Agreement carefully and select **"I accept the terms in the Licence Agreement"**. Click **Next** to continue.



If you reject the Licence Agreement, **"I do not accept the terms in the Licence Agreement"**, you will be unable to install the NetSupport DNA Web Server.

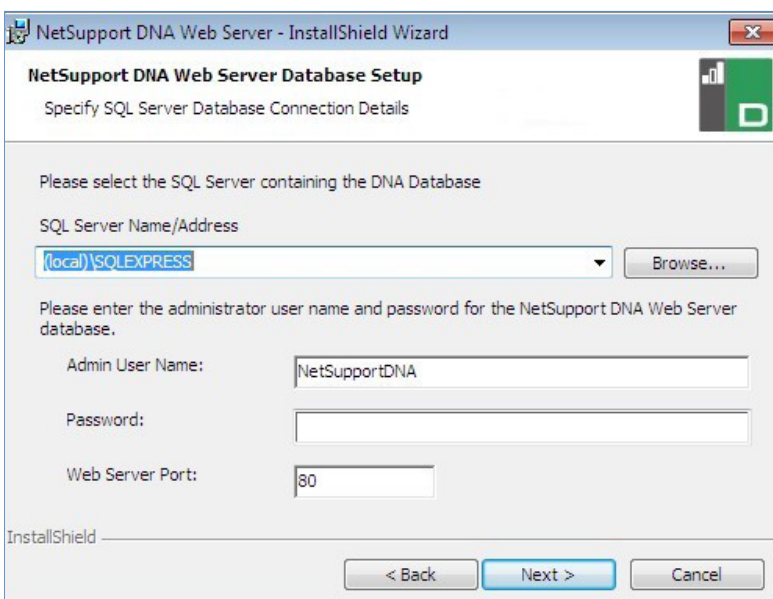
Destination folder

Browse to the location you wish to install the NetSupport DNA Web Server. This defaults to C:\Program Files\NetSupport\NetSupport DNA\WebServer

NetSupport DNA Web Server database setup

The NetSupport DNA Web Server requires the address of the SQL Server that contains the NetSupport DNA database. You will also need to provide the user name and password that the NetSupport DNA Server uses to connect to the database.

You can configure the port the Web Server listens for connections on. By default, this is port 80. If you change the port number for the Web Server, you need to ensure that this is added to the end of the Server address used when logging onto the Mobile Console.





Note: If you do not know the user name or password, run the NetSupport DNA Database wizard on the machine running the NetSupport DNA Server. You can change the user name and password and enter the new details into the installer dialog. You will need to have the user name and password for the administrator of the SQL Server to make this change.

Ready to install the program

To start the installation, click **Install**. To change any of the previous selections, click **Back**. To quit the installation, click **Cancel**.

Installation complete



To complete the installation, click **Finish** to exit the Setup program.

Configuring the NetSupport DNA Mobile Console

The NetSupport DNA Mobile Console app can be downloaded from *Google Play* or *Apple iTunes* store. Once installed on your device, you can log onto the Mobile Console using the same user credentials that you would use for the Windows NetSupport DNA Console. You will need to enter the address of the NetSupport DNA Web Server and your user name and password.




Server	<input type="text" value="10.0.0.163"/>
Username	<input type="text" value="Tom"/>
Password	<input type="password" value="..."/>
<input type="checkbox"/> Show Password	



To enhance the security of the connection to the Web Server, you can specify an optional 16-character security key using the DNAWebServerkey utility installed on the machine running the NetSupport DNA Web Server. Once set, you will need to enter this security key on the logon screen of the Mobile Console.

Enter your Web Server Key. Leave blank to use the default value

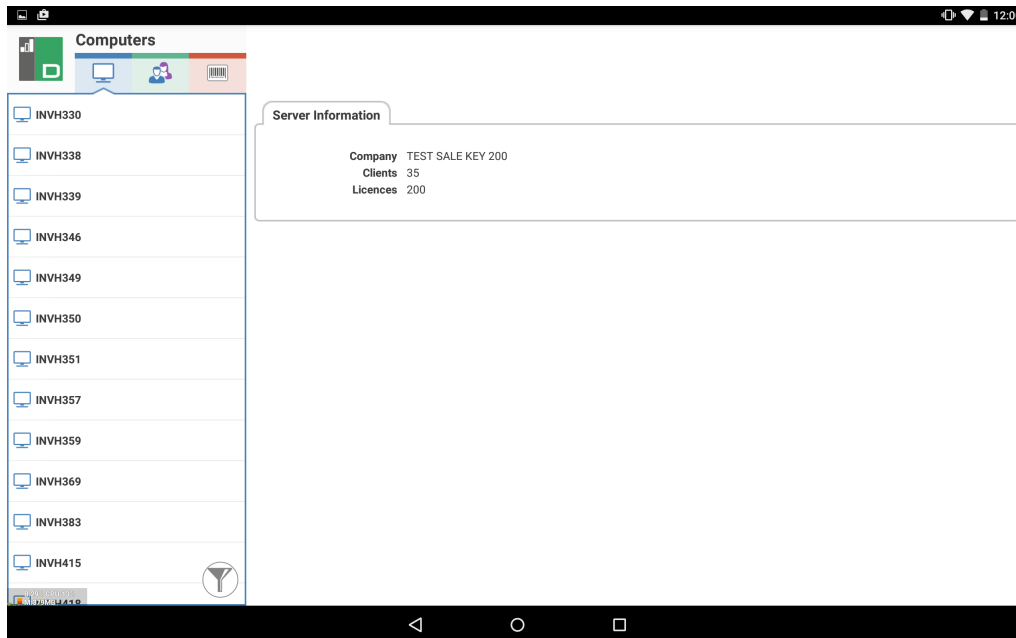


Note: Only one security key can be set per Web Server.



Using the NetSupport DNA Mobile Console

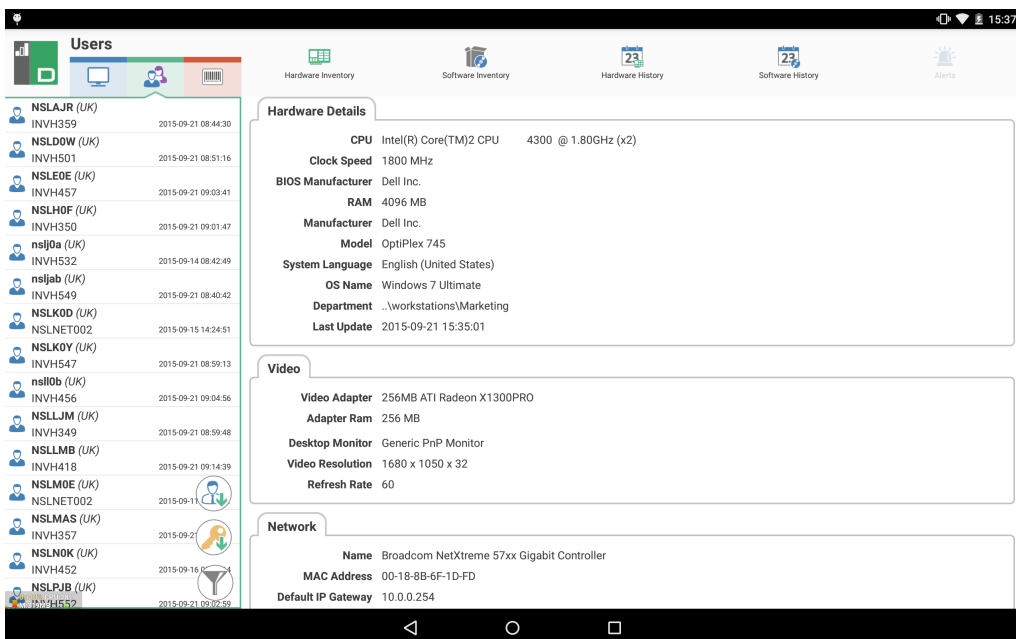
After logging on, the Mobile Console will display a list of all the machines in your company. You can switch between machine names and user/login names by selecting the **Computers** or **Users** icon. To quickly locate individual machines, enter the machine or user (depending on what view you are in) name in the filter box.



To add new Agents to the Mobile Console, select the **Barcode** icon and scan the barcode from the Agent window or barcode label attached to the device.

Note: The NetSupport DNA Windows Console has a barcode label creation facility.

Selecting a machine or user allows you to see the current hardware and software inventory, view a detailed list of the last week's historical changes to the hardware and software and assess the cause of any logged PC alerts.





Contact us

UK & International

www.netsupportsoftware.com

Technical Support: support@netsupportsoftware.com

Sales: sales@netsupportsoftware.com

North America

www.netsupport-inc.com

Technical Support: support@netsupportsoftware.com

Sales: sales@netsupport-inc.com

Canada

www.netsupport-canada.com

Technical Support: support@netsupportsoftware.com

Sales: sales@netsupport-canada.com

Germany, Austria and Switzerland

www.pci-software.de

Technical Support: support@netsupportsoftware.com

Sales: sales@pci-software.de

Japan

www.netsupportjapan.com

Technical Support: support@netsupportsoftware.com

Sales: sales@netsupportjapan.com